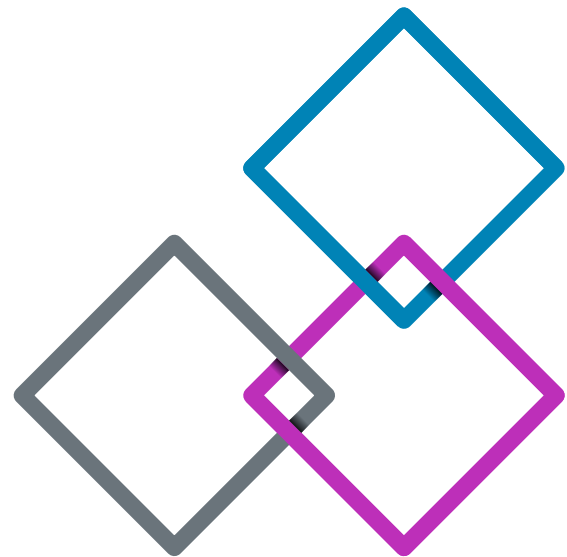
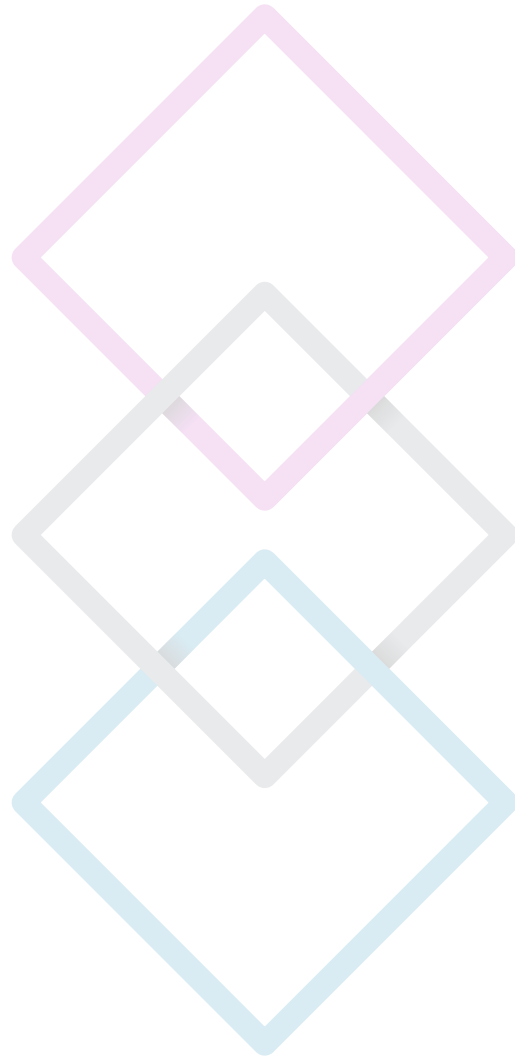


TRATO TLV  
BIOLUME RESINOR



Since 1947



## Summary\_

p. 4/5\_

**Group presentation**

p. 6\_

**Key figures**

p. 8/9\_

**Our values**

p. 14/15\_

**TRATO, custom made lighting**




p. 16/17\_

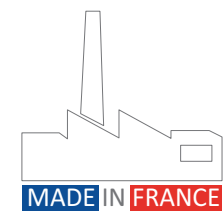
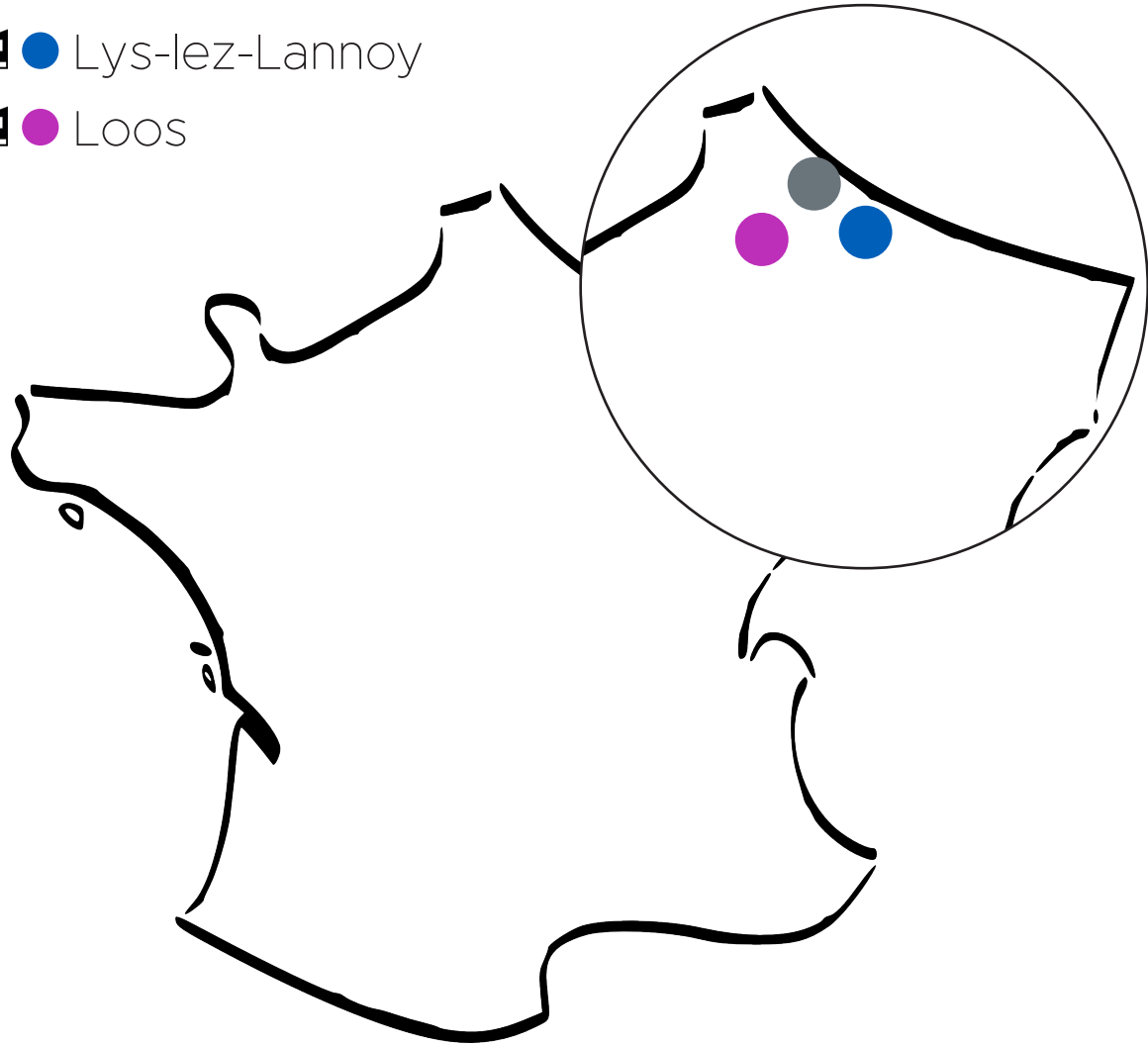
**TLV, hospital equipment**

p. 18/19\_

**BIOLUME RESINOR, medical layout  
and childcare equipment**

### 3 manufacturing sites based in Lille metropole

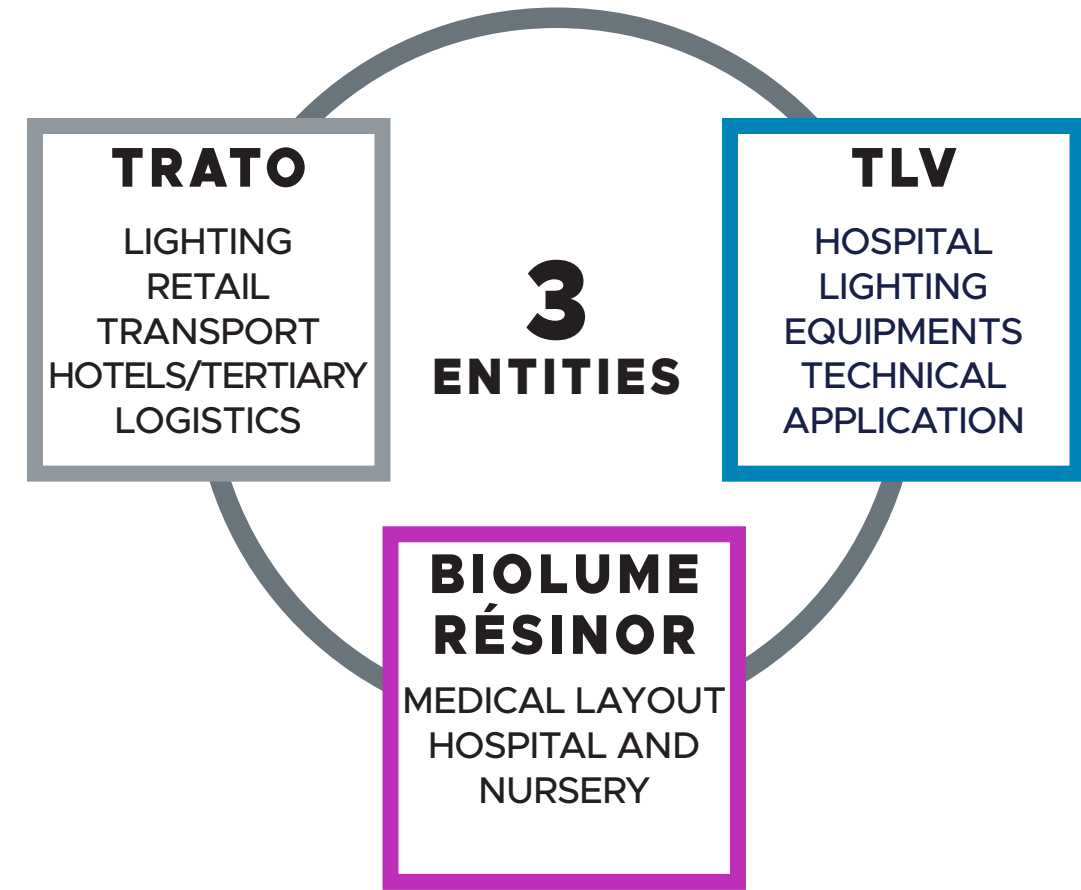
-  ● Roubaix
-  ● Lys-lez-Lannoy
-  ● Loos



These three entities **TRATO**, **TLV** and **BIOLUME RESINOR** offer a large choice of lighting systems, hospital equipments, layouts for the early childhood as well as lighting control and associated services.

With **220 employees** and a modern manufacturing tool, the Group became a European key player in its field. It offers custom-made solutions and focuses the development of its new products on the performance, a low energy usage and energy savings.

**The Group is firmly committed to an environmental approach.**



## OUR KEY FIGURES



**220**  
EMPLOYEES



**MADE  
IN FRANCE**



ANNUAL PRODUCTION OF  
OVER  
**800 000 luminaires**



FOUNDATION  
IN **1947**



REFERENCES IN OVER  
**70 COUNTRIES**



EXPORT TURNOVER  
**20%**, BRANCHES IN BRAZIL  
AND ITALY



LIGHTING SUPPLY OF  
**5000 STORES/YEAR**



**3**  
PRODUCTION SITES  
IN FRANCE



**4%**  
OF TURNOVER  
DEDICATED TO R&D





# OUR VALUES

## Innovation

Manufacturing innovative and efficient lightings, by regularly investing in our production tools and by mobilising 4% of our turnover into research and development.

## Efficiency

The measure of efficiency, the training and the continuous improvement in order to benefit our clients from our innovation policy.

## The environmental approach

The group owns a societal and environmental responsibility policy and sets each year environmental improvement goals. TRATO and TLV are evaluated by the organisation Ecovadis.



## Listening

The attention to our clients and suppliers' needs and suggestions to develop productive and harmonious relationships.

## Ethics

Ethics, being respectful of the laws, the rules and the standards in order to offer to our internal and external partners a safe and peaceful environment.

## Involvement

Involvement, integrity and respect for commitments made in order to establish a climate of trust with our partners so that together we can achieve the objectives set.





BIOLUME RESINOR,  
Loos site



TLV,  
Lys-Lez-Lannoy site

TRATO,  
Roubaix site







State of the art  
technology production  
tools



6 500 m<sup>2</sup> storage





TRATO, lighting designer and manufacturer for more than 70 years. The family business specialised in the design of lightings for retail shops in France and around the world. Reference in the market of lighting manufacturers and with a factory in the state of the art technology, several renowned brands trust TRATO with their lighting projects and especially in the retail.

## APPLICATIONS

Retails – logistics & transportation – Services and Industry

- **Production site** : Roubaix
- **Collaborators** : 121 employees
- **Surface area** : 15 000 m<sup>2</sup>
- **Products** : row lightings, continuous rows, suspended luminaires, orientable and adjustable, custommade decorative luminaires...





TLV, designs, manufactures in France and sells around the world lightings and hospital equipment for normal care and technical units.

## APPLICATIONS

Hospitals – clinic – nursing homes

- **Production site** : Lys Lez Lannoy
- **Collaborators** : 74 employees
- **Surface area** : 4900 m<sup>2</sup>
- **Products** : Bed Head Units, ceiling pendant, special care units and suspended columns, hospital lighting...





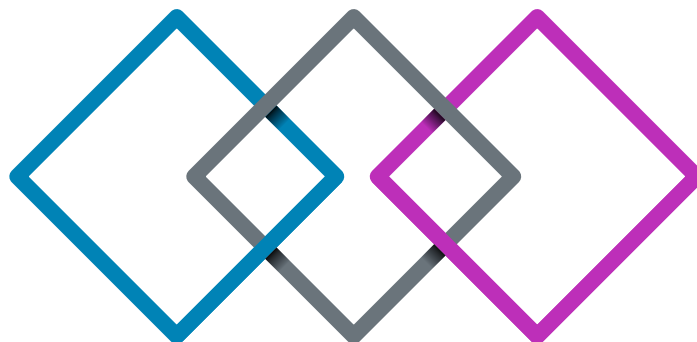
Biolume Résinor designs and manufactures, in France, healthcare products (lighting, changing tables, work benches, hygiene facilities, furniture) for hospitals and childhood professionals.

## APPLICATIONS

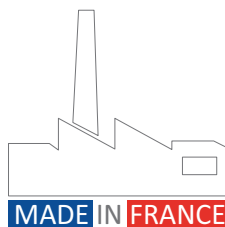
Hospitals, Clinics, nursing homes, day care and childhood establishments

- **Production site** : Loos
- **Collaborators** : 25 employees
- **Surface area** : 4800 m<sup>2</sup>
- **Products** : changing units, work benches, basins, furniture





Performance & Innovation



Siège social TRATO-TLV - 22, rue Molière - BP369 - 59057 ROUBAIX Cedex 01 (Lille) FRANCE  
Tél. : +33 (0) 320 81 50 00 - Fax : +33 (0) 320 81 50 19 - Email : [contact@trato.fr](mailto:contact@trato.fr) - Web : [www.trato-tlv.com](http://www.trato-tlv.com)  
Siège social BIOLUME-RESINOR - Parc EURASANTÉ - 310, rue Jules Vallès 59120 Loos FRANCE  
Tél. : +33 (0) 328 160 480 - Fax : +33 (0) 328 160 489 - Email : [contact@biolume.com](mailto:contact@biolume.com) - Web : [www.biolume.com](http://www.biolume.com)

Since 1947